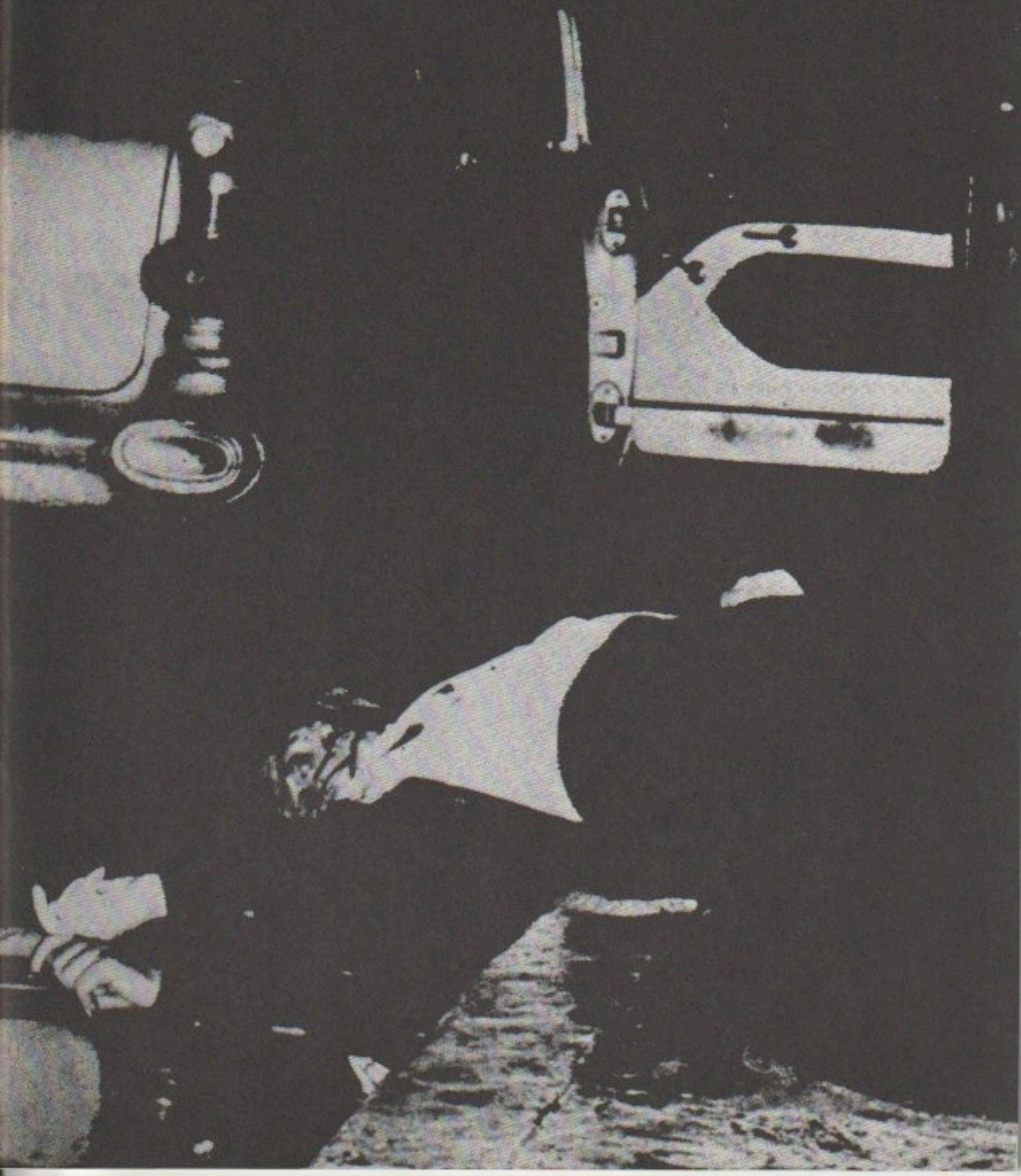


*R E A L L I F E* Magazine



# REAL LIFE Magazine

Number 5, Winter 1980

**Editor:** Thomas Lawson

**Associate Editor:** Susan Morgan

**Design:** Deborah De Staffan

**Contributors to this issue:**

Joseph Bishop is an artist from Las Vegas.

Kim Gordon is a director of Design Office.

Sherrie Levine is an artist living in New York.

Allan McCollum is an artist living in New York. His work was most recently exhibited at *Galerie Yvon Lambert*, Paris.

Gerry Morehead is an artist living in New York and currently has some drawings on view at *The Drawing Center*. He will be showing drawings and paintings at the *Los Angeles Museum of Art*, in cooperation with *F.A.R.*, in January.

Michael Smith, who lives in New York, performs comedy. He will be appearing with a band called *Social Climbers* in clubs throughout The Netherlands this winter.

Valentine Tatransky is an art critic who contributes regularly to *Arts Magazine* and *Flash Art*.

Address all correspondence to the editor, 41 John Street, New York, NY 10038.

Telephone: (212) 349-4053.

Subscription rates: \$8.00/year; \$15 foreign airmail. Please include remittance with order.

All contents ©1980 REAL LIFE Magazine. All rights reserved.

REAL LIFE Magazine is published quarterly.

This issue is supported, in part, by the National Endowment for the Arts, and the Committee for the Visual Arts.

<b>William Wegman as told to Susan Morgan</b> .....	3
<b>Matt Mullican's World</b> .....	4
Allan McCollum	
<b>Mike in: What Should I Do About The Car?</b> .....	14
Michael Smith	
<b>Dash and Dot</b> .....	16
Gerry Morehead	
<b>The Beautiful Girl Across The Hall</b> .....	19
Valentine Tatransky	
<b>Honeymoon Habit</b> .....	21
Kim Gordon	
<b>Two Photographs After Walker Evans</b> .....	22
Sherrie Levine	
<b>Phillip Smith</b> .....	24
an interview by Joseph Bishop	